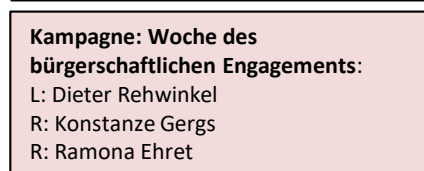
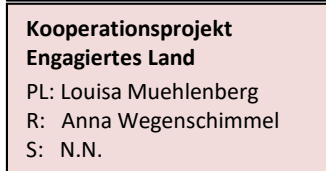
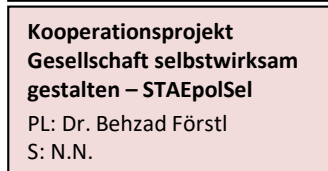
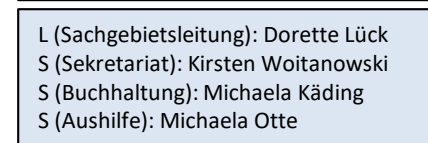
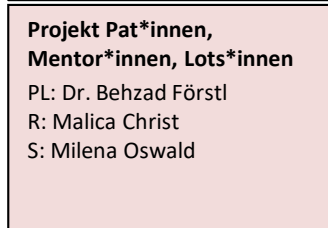
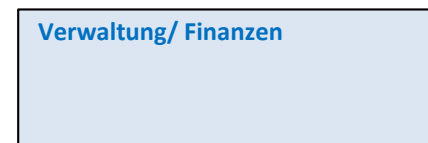
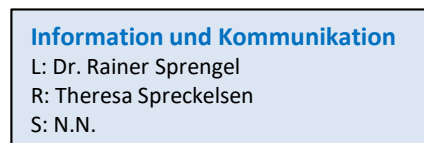
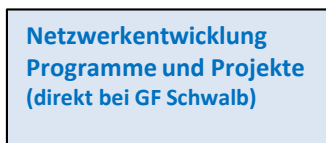
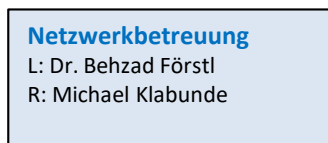
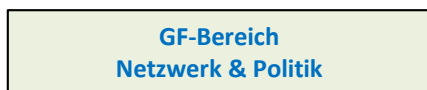
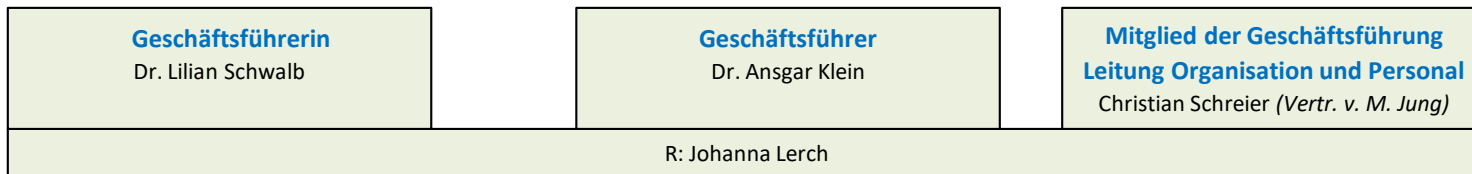


Organigramm der BBE Geschäftsstelle gGmbH 2022

Michaelkirchstraße 17/18, 10179 Berlin, Tel: 030-62980-110

Stand: 01-03-2023

Kontaktdaten finden Sie unter: <https://www.b-b-e.de/team/>



GF: Geschäftsführung / L: Leitung / PL: Programmleitung/ Projektleitung / (Lt.) R: (Leitende*) Referent*in/ S: Sachbearbeitung, Projektmitarbeiter*in
Arbeitsbereich Geschäftsführung = grün / Arbeitsbereich Geschäftsstelle = blau / Arbeitsbereiche Programme und Projekte = rot / Zugeordnete Projekte = weiß